



Librarian
&
Community
Member

Rural Resiliency Hubs:

An Integrated, Community-Centered
Approach to Addressing the
Resiliency Divide through **Rural
Public Libraries**

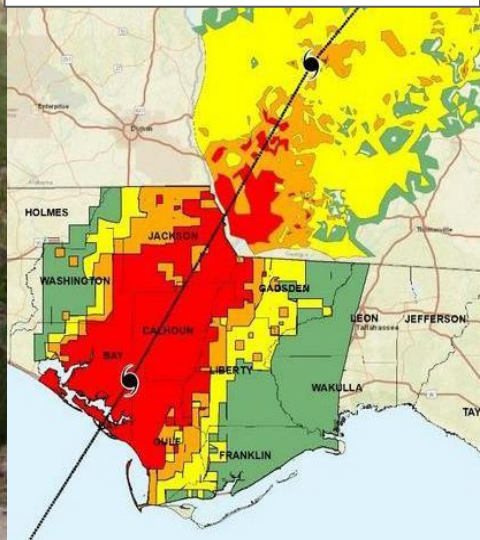
A partnership between



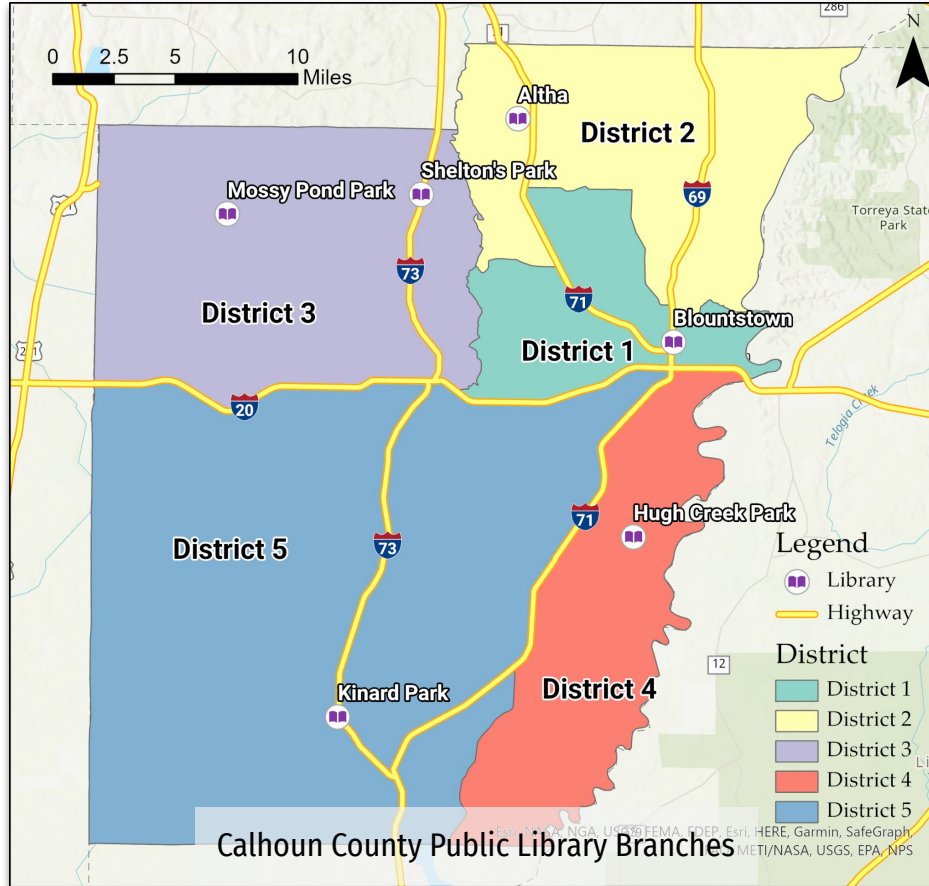
NSF 2041039 & NSF 2133308



Calhoun County, FL



Approach



What goes into a Resiliency Hub?



Health

- Mobile health units
- First aid

Infrastructure

- Debris reporting
- Distribution
- Evacuation maps
- Disaster data keeping

Housing

- Sheltering
- Voucher assistance
- Hotel location

Community

- Information
- Legal assistance
- Internet and fax

Natural Resources

Economy/Workforce

Project Showcase—Approach

RQ1. Who are the **key beneficiaries** and what do they need?



RQ2. What is the **process** of designing a resiliency hub?



RQ3. What do library resiliency hubs **provide** and how can they be **sustained**?

Quantitative Data
(Tasks 1-3)

- fuse heterogeneous data
- Develop multi-network resiliency metrics and dynamic multivariate prioritized risk maps
- dynamic spatiotemporal hurricane impact assessment

Qualitative Data
(Task 4-5)

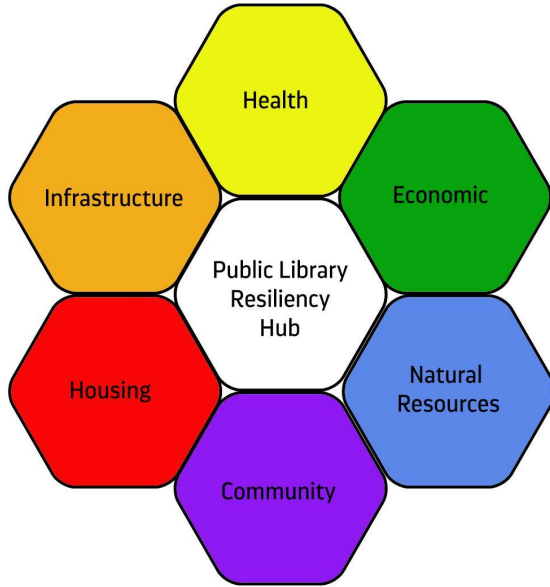
- assessing mapping design process through community perceptions of vulnerability
- community health and safety assessments for children and adults



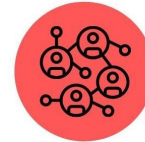
Data Integration and
Community Validation
(Task 6-8)

- listening sessions with residents
- steering committee meetings of local government
- ongoing meetings with librarians

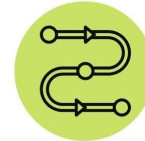
Outcomes



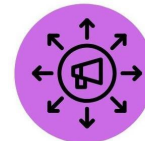
(1) understand and address the diversity of resources, needs, barriers, etc. across different geographic locations in the county;



(2) create new/structured disaster prep and response network of local community and stakeholders;



(3) create a rural resiliency hub inclusive co-design process centered on existing library systems; and



(4) identify common design elements based on successes and needs in past disasters and apply findings to address barriers and scale the design process to whole/other counties.



Sample Resiliency Hub Plan Assets: Mossy Pond Example



District 3 (Mossy Pond)

Library guides: Sparse population, Predominantly white, median age 34, high poverty, educational attainment, low disability

District disaster impacts: wind damage, road debris, power outage, uninsured residents, unemployment, depopulation

Gaps: road block reporting, generator access, employment postings, telehealth, Spanish language versions of county and state documents, legal assistance, basic distribution



Sample Resiliency Hub Plan Assets: Kinard Park Example

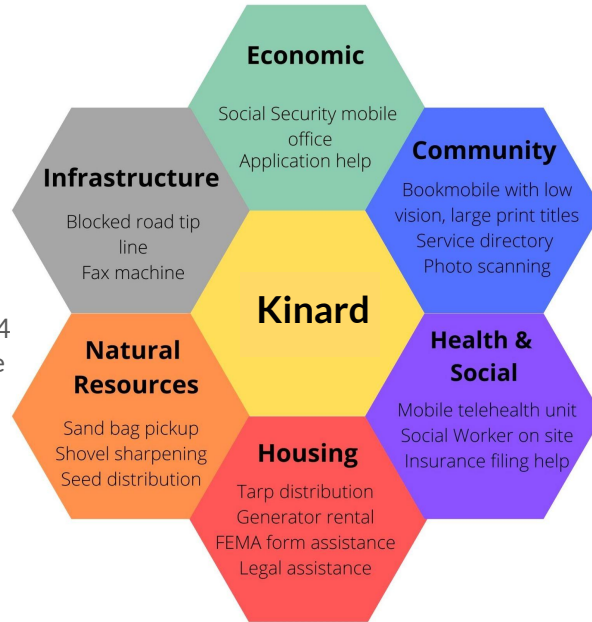


District 5 (Kinard)

Library guides: More densely populated, Predominantly African American, median age 64 high poverty, low literacy, high disability; service area overlaps with main branch

District disaster impacts: flooding, road debris, power outages, medical emergencies

Gaps: legal assistance, social security form, ability to submit to FEMA, insurance company, etc., lack of tech skills



Photos from GIS Map Vulnerability: Infrastructure



Student 31: " Pictures 31.07 and 31.08 show our community's vulnerability. In both pictures it shows buildings that are still closed down and destroyed since the storm. People do not have the will or money to fix them."



Student 29: "This picture shows one example of destruction that is still relevant in our community from the hurricane. This caution light in Altha used to be hooked up and working, but now the wires are just dangling down."

Photos from GIS Map Vulnerability: Environment



Student 24: "The trees across from our school are slightly leaning but still standing from the storm. This is an example of vulnerability because a strong gust of wind or another powerful storm could cause branches from these trees to fall off onto the houses surrounding them."



Student 29: "I took this picture of an area on the way to school that used to have a lot of trees, but now many many trees are down and it still looks sparse."

Photos from GIS Map Vulnerability: Community



Student 20: "The location of the now demolished Civics Center where we hosted events like dances and Make-a-Mess. This is a vulnerability as we couldn't rebuild an important building in our town."



Student 39: "This lot used to be where the old Altha Public School was placed before the hurricane damaged it. It was too damaged and eventually torn down. This is what remains."

Next Steps



Designing Rural Resiliency Hubs in Libraries to Benefit Our Most Vulnerable Residents
(NSF 2041039& NSF 2133308)

